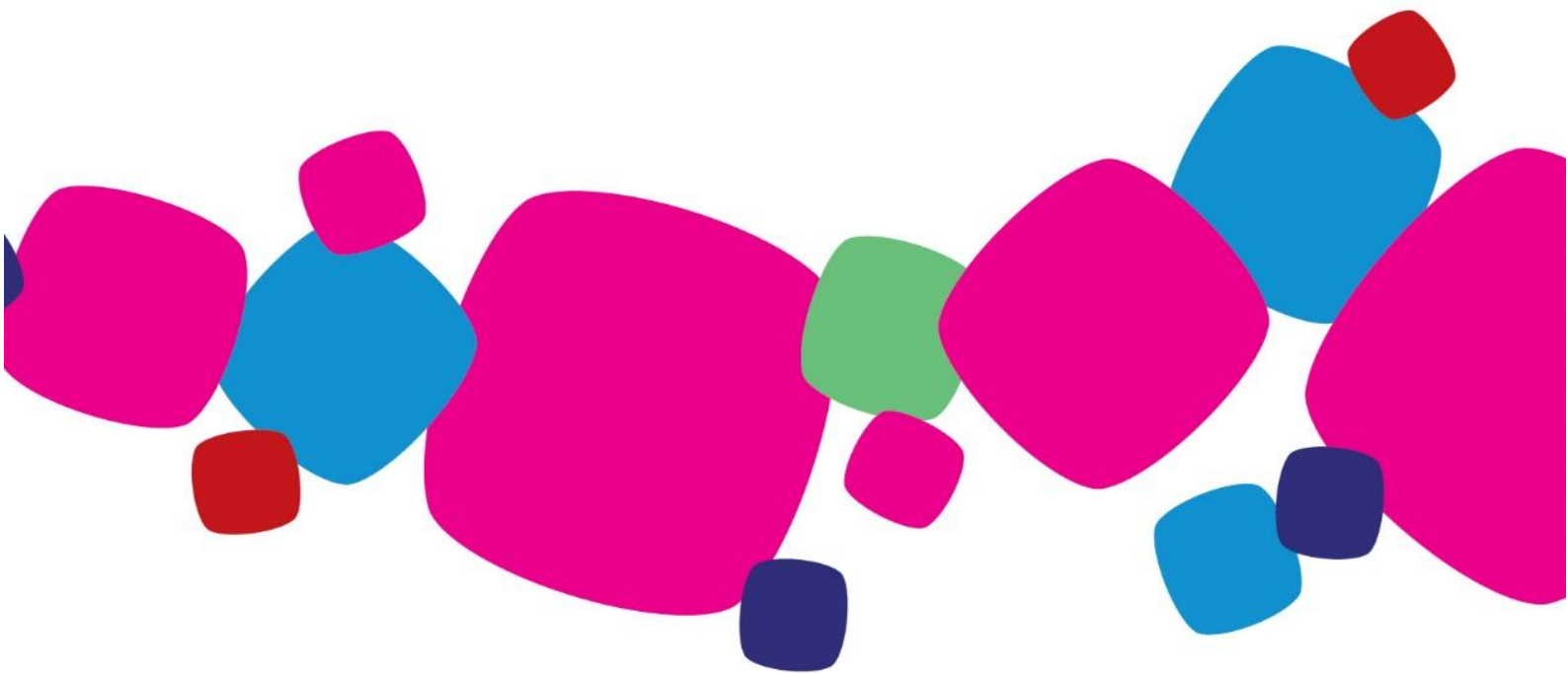


Disclosure of Financial Status and Operating Results Muang Thai Life Assurance Public Company Limited

Form Por Phor Chor.1 (Quarterly)



Information Disclosure Form
(Appendix to the Registrar Order No. 47/2561 (2018))
Re: Disclosure of Financial Status and Operating Results of
Life Insurance Companies

Part 1 Certification of the Accuracy of Disclosed Information

The Company has reviewed the disclosed information with care and certifies that the disclosed information is complete and accurate, not being false or misleading, or lacking material/ significant information. The Company hereby certifies the accuracy of all information disclosed.

Signed Sara Lamsam

Name (Mr. Sara Lamsam)

Position Authorized Director

Signed Pakineenard Tiyachate

Name (Mrs. Pakineenard Tiyachate)

Position Authorized Director

On 29 Nov 2019

Data of quarter 3/2019

1. Capital Adequacy

MTL places great emphasis on capital that reflects the financial strength and credibility of the company. The capital management is under supervision of the Risk Management Committee to ensure that the Company's risk level is maintained within risk appetite.

The main objectives of MTL's capital management are to strengthen the capital position and ensure capital adequacy for business undertaking under normal and stressed conditions as well as being consistent with the company's risk level, business strategy, and business plans. MTL effectively manage capital aims at maximizing stakeholders' returns through various management processes e.g. financial planning, asset and liability management, product pricing and performance assessment.

Capital management procedures ensure alignment of business plans, business strategy, risk appetite, and capital position. The capital management covers various types of risk including insurance risk, market risk, credit risk, and other risks. MTL also assess capital adequacy under stressed conditions and management actions are in place to handle stressed events and ensure the capital adequacy.

MTL regularly assesses, monitor, and reports capital adequacy under normal situation and stressed conditions to the Board of Directors to ensure the effective and timely capital management. Moreover, MTL has continuously developed its capital management process.

Disclosed on 29 Nov 2019

Unit: Million Baht

Items	Quarter 1		Quarter 2		Quarter 3	
	2019	2018	2019	2018	2019	2018
Capital Adequacy Ratio (Percentage)	326.2	396.6	340.2	384.7	402.0	379.3
Total Capital Available	85,058	88,118	94,577	84,298	135,668	88,348
Total Capital Required	26,076	22,218	27,802	21,912	33,746	23,293

- Remark** - According to the OIC Notification Re: Determination of types and categories of capital including rules, procedures and conditions of capital calculation of life insurance companies, the Registrar may impose necessary measures to supervise companies whose capital adequacy ratio is lower than one hundred and forty percent.
- The capital is calculated based on appraisal value according to OIC Notification Re: The valuation of assets and liabilities of Life Insurance Company.
 - Quarter 2 refers to 6-month performance. Quarter 3 refers to 9-month performance.

2. Financial Reports

Audited Financial Statements for the Quarter

https://www.muangthai.co.th/en/download/Financial_Position



MUANG THAI LIFE
ASSURANCE

เพราะความสุขคือทุกอย่าง
Happiness Means Everything